

# TRIBAL CULTURES AND CONTEXT TO ENRICH YOUR OUTDOOR EXPERIENCES

Land Acknowledgement Webinar: 12/10/19

Carryover from AORE AEE Spokane Conference

**DR Michel**

Executive Director, Upper Columbia United Tribes

**John E. Sirois – say'ay'**

Committee Coordinator, Upper Columbia United Tribes



**N'pta'kw'**

**The Big River, Columbia River**

## **TOPICS TO COVER:**

- Introduction
- Engage local Tribes about historical sites
- Local Columbia River Examples
- Engage local Tribal organizations; River Warriors Example
- Do research; Legacy & Current Pollution
- Questions





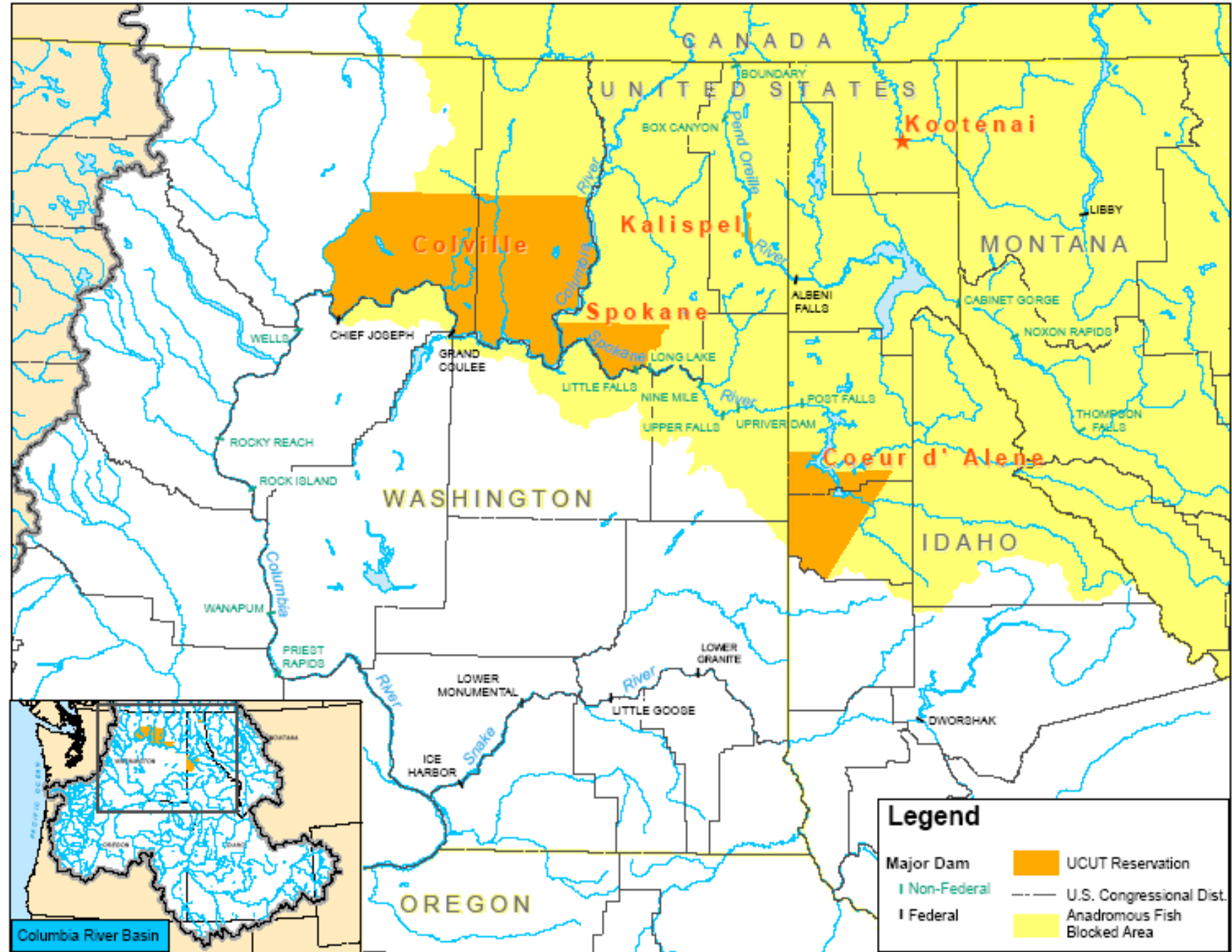
Coeur D'Alene Tribe of  
Indians

Confederated Tribes of  
the Colville Reservation

Kalispel Tribe of  
Indians

Kootenai Tribe of Idaho

Spokane Tribe of  
Indians





***MISSION  
STATEMENT***

To unite Upper Columbia River Tribes for the protection, preservation, and enhancement of Treaty/Executive Order Rights, Sovereignty, Culture, Fish, Water, Wildlife, Habitat and other interests and issues of common concern in our respective territories through a structured process of cooperation and coordination for the **benefit of all people.**

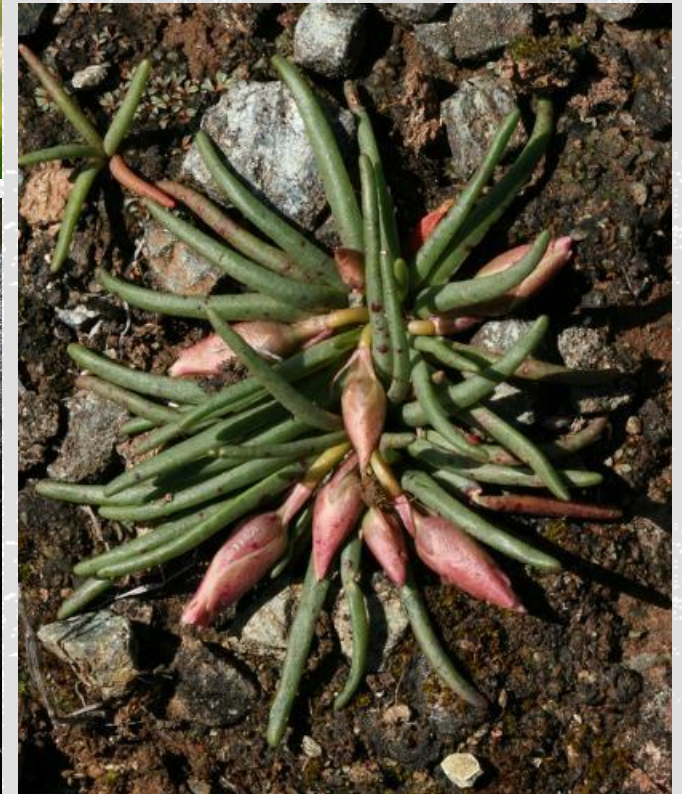
# **UPPER COLUMBIA UNITED TRIBES**

- **Together, the Upper Columbia United Tribes manage and influence:**
- **2 million acres of reservation land.**
- **At least 14 million acres of aboriginal territories, 500 miles of waterways, 40 interior lakes, and 30 dams and reservoirs.**
- **For the benefit of all people - forests, fish, wildlife, and native plants and habitat.**



# MUS IL'MITHM FOUR CHIEFS

- All begins with water
- **Water is Life**
- Four Chiefs;
  - salmon, bear, bitterroots, service berry
- Relied heavily on that source of nourishment; physical/spiritual
- First Scientists who knew the seasons and harvested what the land provided





**“EVERYONE GOT AN EQUAL SHARE SO THAT THE FISH WOULD NOT THINK HUMANS WERE BEING STINGY OR SELFISH AND SO REFUSE TO RETURN. THE FATE AND WELL BEING OF THE FUTURE DEPENDED ON HOW PEOPLE TREATED THE FISH.”**

**-- *MOURNING DOVE***

*indigenous Peoples' Cultural teachings and framework*



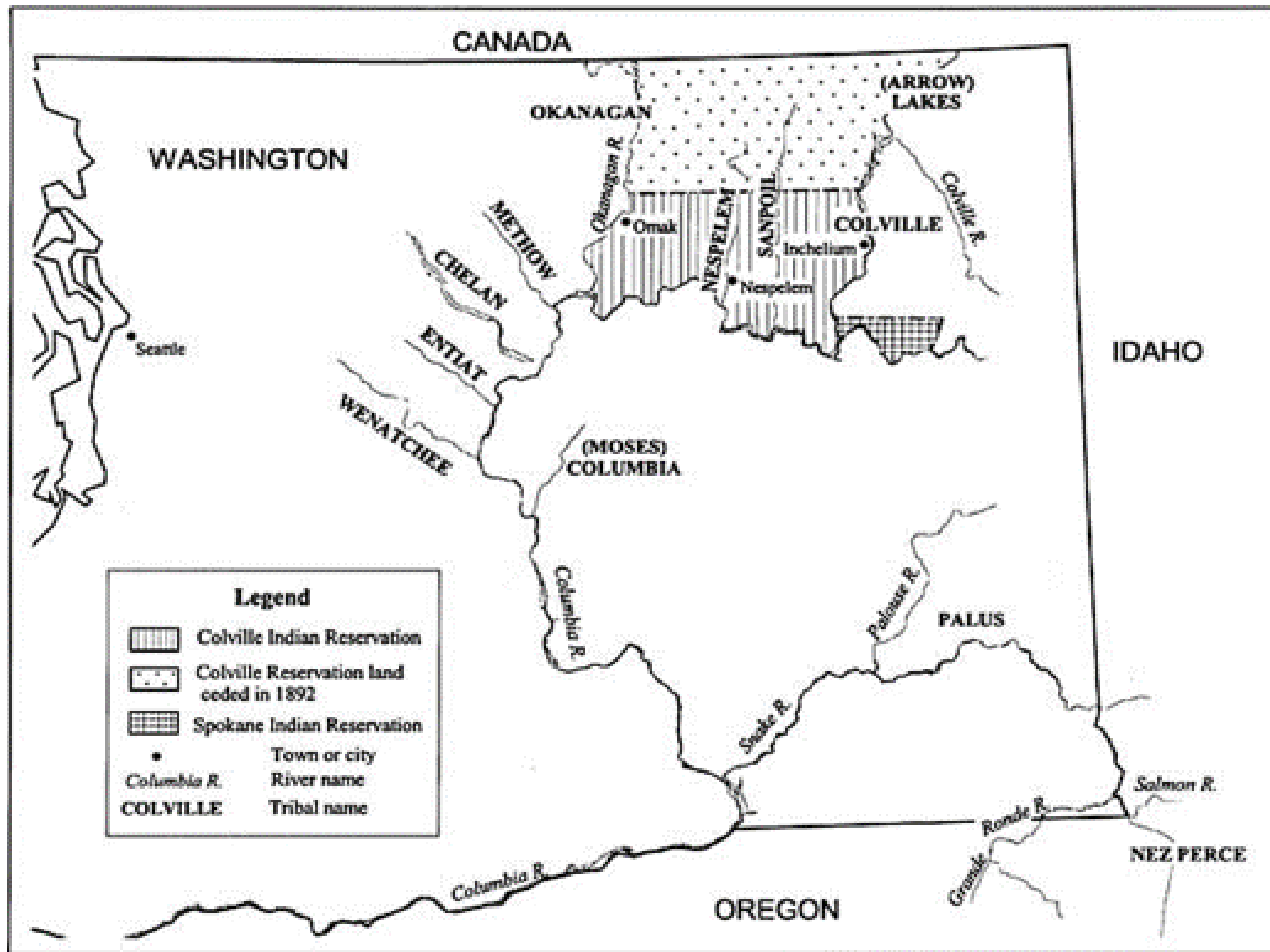


# ENGAGING LOCAL TRIBES

- Protocol to engage Tribal contacts;
  - Contact PR person, if a Tribe has one,
  - Explore Tribe's website for possible contacts, FB Page
  - Look to local magazines like the Inlander in our area.
- Keep Trying; some folks are busy
- Local Tribal groups like River Warriors can be key connections
- Again, follow up, they can be busy

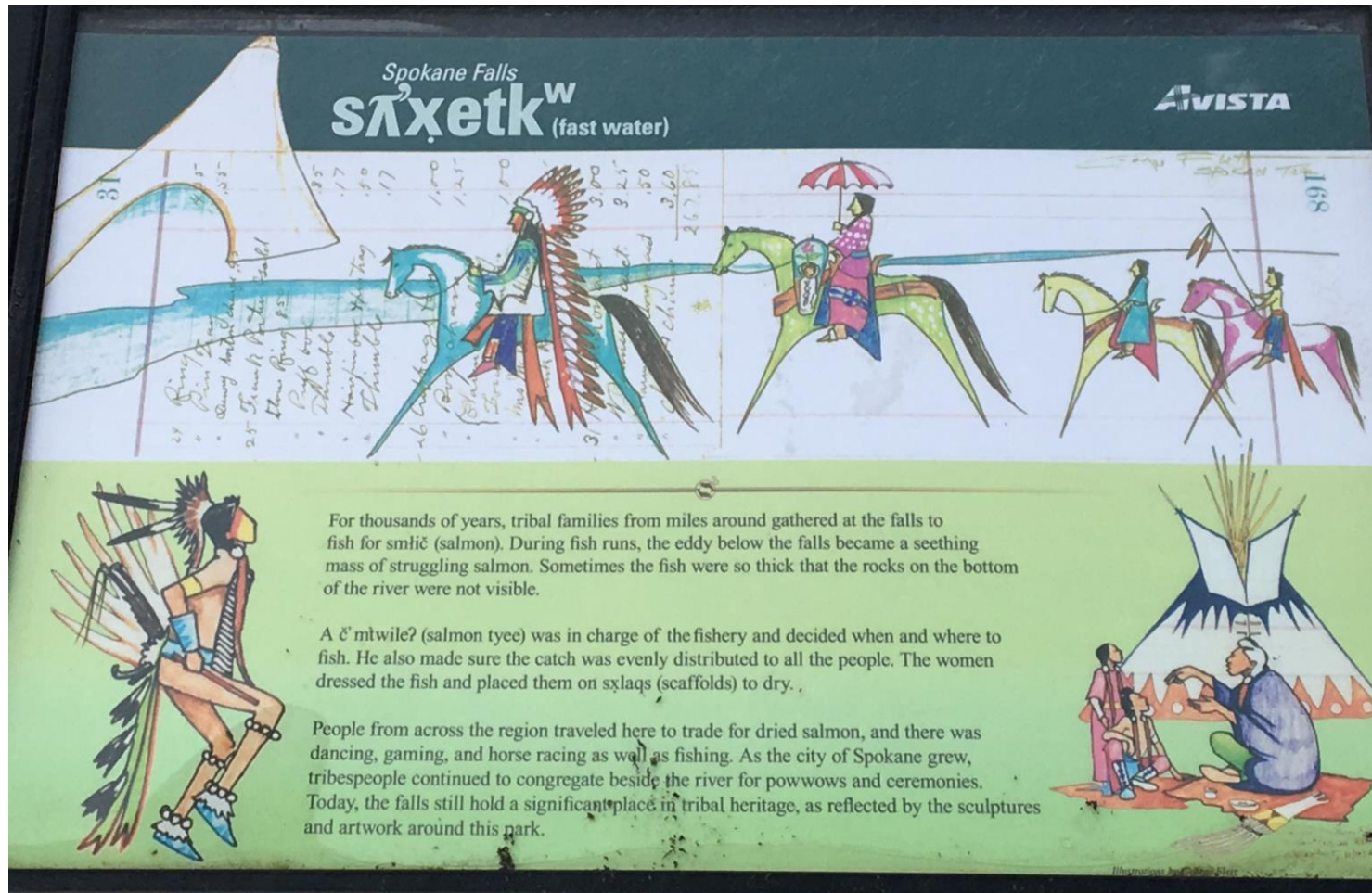






LOCATIONS OF COLVILLE INDIAN RESERVATION AND PRE-RESERVATION TRIBAL GROUPS



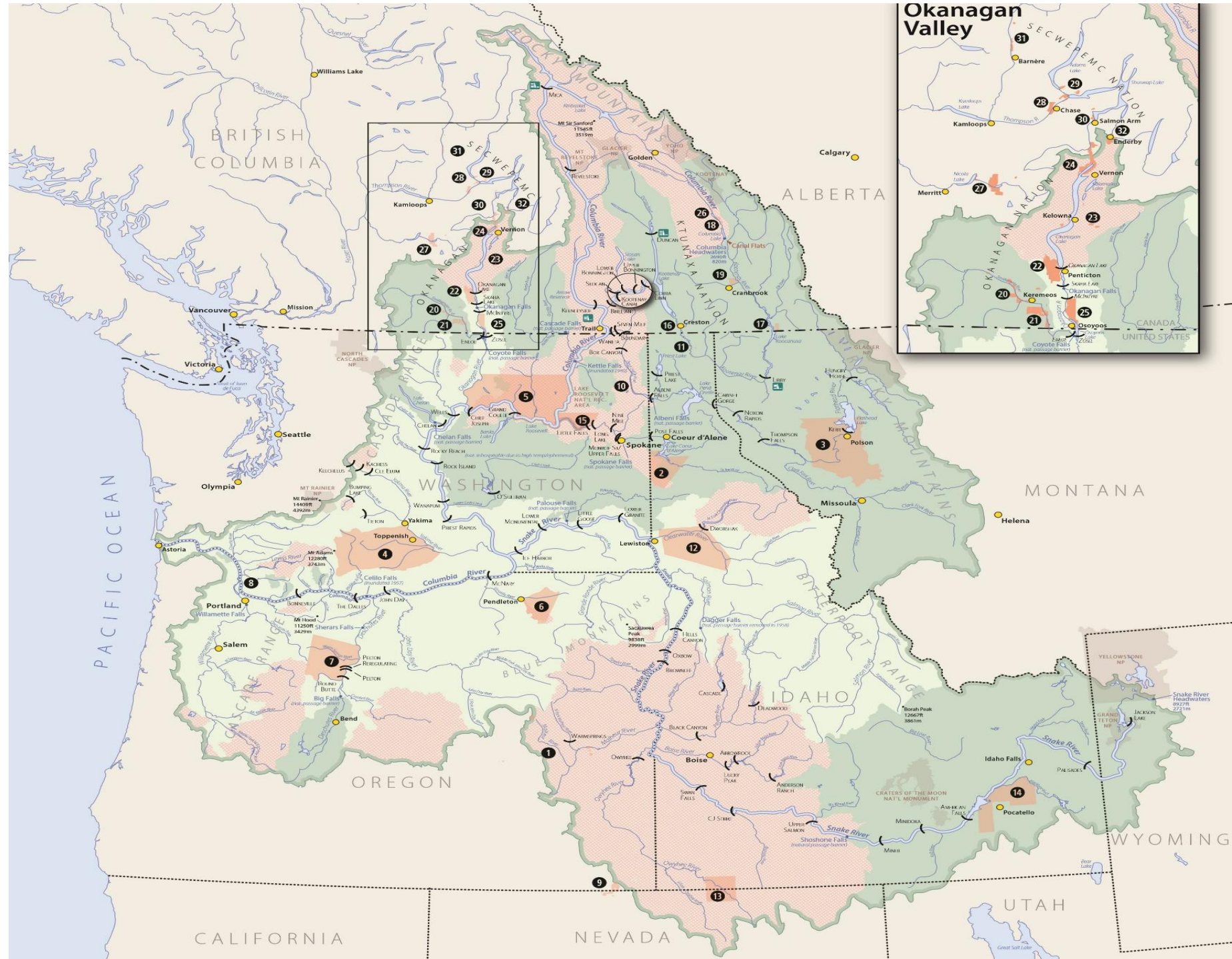


## ENGAGING LOCAL TRIBES

- Take time to understand local Tribal history
- Explore the issues Tribes are working on like water quality for contacts
- Understand Tribal land status or they maintain their lands and water
- Are there current issues that impact them?
- See if local Tribe has someone that can speak to those issues on site!



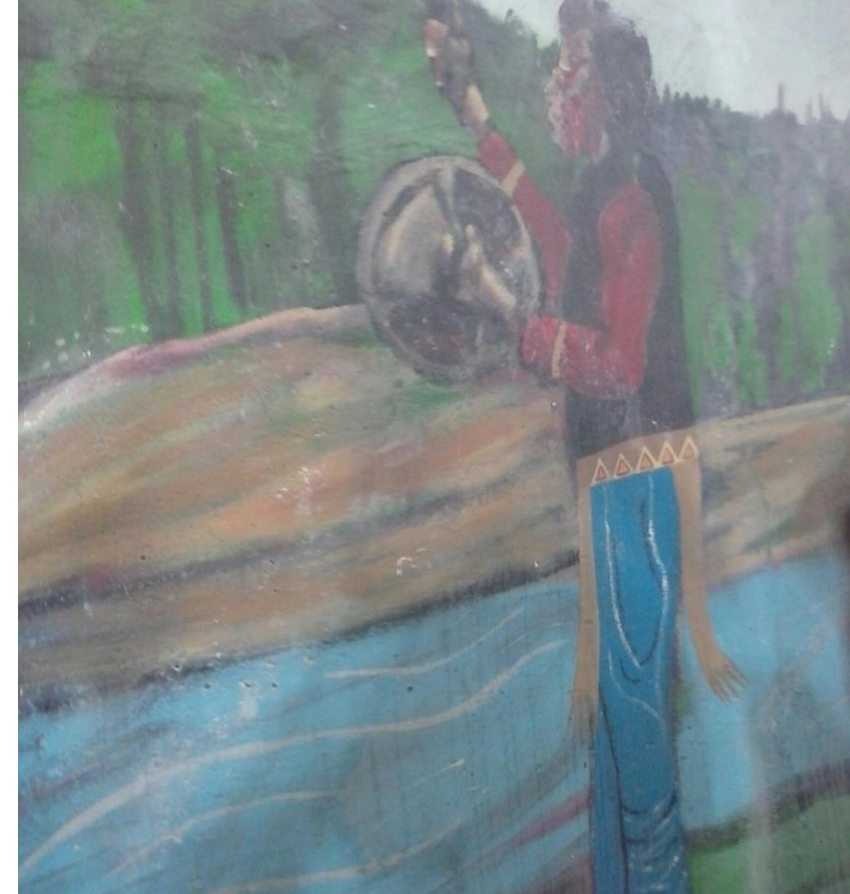
# INDIGENOUS PEOPLES OF THE COLUMBIA RIVER BASIN





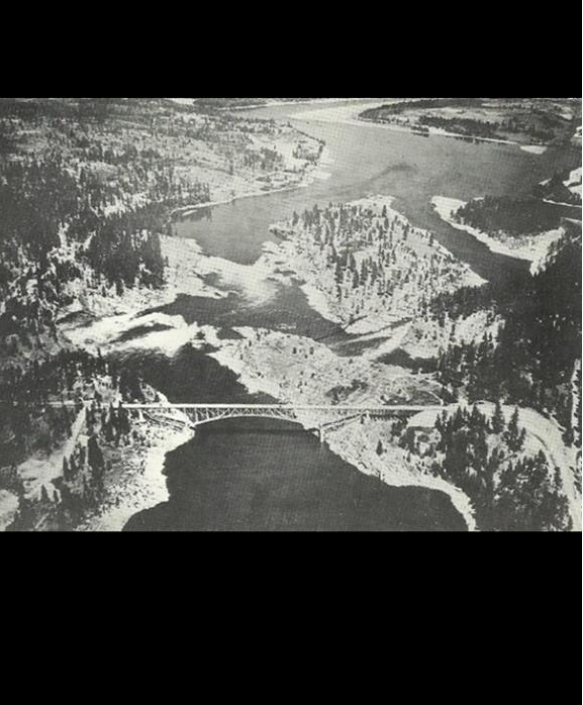
- ❖ **The Big River, while electrified, has a lot of recreation sites.**
- ❖ **Visitor centers, many times, have contacts with Tribes**
- ❖ **They also partner with local Tribes to conduct community outreach**
- ❖ **Tribes Museums are a great resource!**





**EXAMPLES OF COLUMBIA RIVER BASIN IDEAS TO  
CONNECT WITH TRIBES TO ACKNOWLEDGE THE  
LAND AND WATERS**





# KETTLE FALLS

- Historic Fishing site that yielded millions of salmon each year
- 2.6 to 3.7 million salmon runs
- Sharpening Stone
- Historically a Huge Celebration
- Annual Salmon Ceremony
- National Parks Service of Lake Roosevelt





# **SALMON CEREMONY**

*Held every year at Kettle Falls  
during Summer Solstice:*

*Public is more than Welcome!*



## **SPOKANE FALLS**

- **Historic Fishing and Celebration Gathering site**
- **June Hogs at Spokane Falls**
- **Opportunity to education health of the Spokane River Watershed**







## **GREATER SPOKANE TRIBAL HISTORY**

- Chief Spokane Garry School at Drumheller Park
- Influence at Spokane Riverfront Park
- Spokane Solar Business, Children of the Sun
- NW Museum of Arts and Culture's Plateau Collection





# SPOKANE TRIBAL ISSUES

- Spokane River Water Quality Standards
- Salmon Passage beyond Grand Coulee Dam – White Sturgeon Recovery
- Midnite Mine clean up





## **GREATER SPOKANE AND COEUR D'ALENE TRIBAL HISTORY**

- Hangman Creek was a shared fishery
- Gen. Wright's slaughter of Tribes' horses during the Spokane/Coeur D'Alene war with the US government.
- Those histories live on today



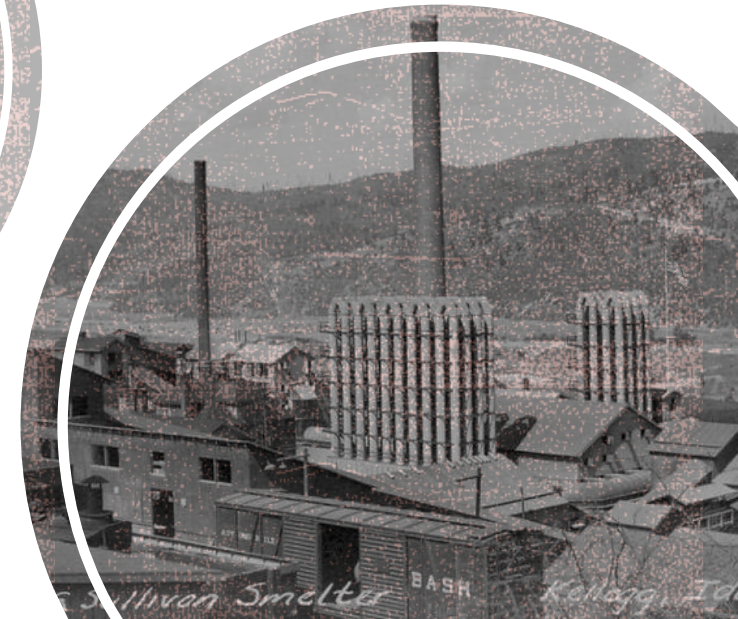


# COEUR D'ALENE TRIBE ACTIONS ON THE LAND AND WATERS



# OLD MINES AND NEW; COEUR D'ALENE ISSUES

- The Tribe's efforts have gone on for many years fighting to clean it up.
- EPA worked with a mining corporation to re-start Bunker Hill mine
- Mining Corporation will use Treatment Facility (paid for by Coeur D'Alene settlement funds) in exchange for paying annual \$1 Million fee.





## SAVE THE DATE

### Movie Premier of **LAST STAND: THE VANISHING CARIBOU RAINFOREST**

THE EVENING OF  
**SATURDAY, MARCH 3, 2018**

Hosted by the Kalispel Tribe at  
Northern Quest Resort & Casino  
Airway Heights, WA 99001

- Meet the movie producer and production team
- Banquet and fundraising auction to follow
- All proceeds will go to the South Selkirk Mountain Caribou herd



# KALISPEL TRIBE

## Kalispel Tribal Projects:

- Resident Fish efforts in the Pend Oreille River
- Protecting the endangered Caribou herd in the PNW.
- Maintaining a Class 1 Airshed in the face of proposed smelters
- Water Potato Dig with youth



# PACWEST SMELTER PROPOSED PROJECT



Edmonton-based PacWest Silicon proposes to:

- invest up to \$325 million in a new state-of-the-art silicon refining facility, create 170 permanent jobs with a median income of \$70K/year.
- Expected output of 320,000 tons of carbon dioxide annually,
- It would become WA State's 15th-largest emitter of greenhouse gases,
- Severe impacts to Kalispel and Kootenai Tribes' airshed and wildlife habitats.
- PacWest officials claim the silicon's final use in solar panels will offset emissions





# KOOTENAI TRIBE OF IDAHO

## Kootenai Tribe of Idaho Projects:

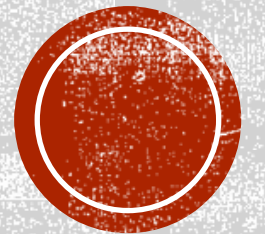
- Kootenay River Restoration
- Protecting the endangered Grizzly and Caribou herd in the PNW.
- Operating burbot and sturgeon hatcheries
- Dealing with legacy selenium from mines in watersheds





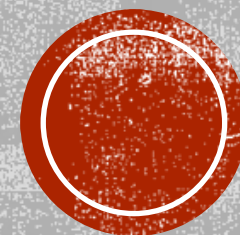



**EXAMPLES OF COLUMBIA RIVER BASIN ISSUES TO  
AWARE OF IN CONNECTING WITH TRIBES**





# **COLUMBIA RIVER TREATY AND THE IMPACTS OF DAMS**





COLUMBIA  
RIVER SYSTEM  
OPERATIONS –  
HYDROPOWER &  
RESERVOIRS

- Indigenous Peoples fought hydropower construction since the 1930's. The Colville Confederated Tribes filed suit in 1936 before Grand Coulee Dam was built.
- It was legislatively settled in 1997.
- The implementation of the Columbia River Treaty authorized detrimental operations to maximize power and flood control disregarding Tribal rights or others' uses.
- Blockage of Anadromous fish for generations; millions of salmon a year
- Downstream users rely on upper Columbia River water despite its importance for the resource

**COLUMBIA  
RIVER  
TREATY  
ADOPTED  
1964**

***Originally, the Treaty addressed very little;***

- **Hydropower Production**
- **Building, Operating**
- **Assured Flood Storage by Canadian Dams to protect Portland**

**\*It did not consider ecosystem function nor the rights and interests of Tribal Nations**





## Indigenous Voices Impact the Process

- The Tribal Governments voices in the US Regional Recommendation submitted in 2013. <http://www.crt2014-2024review.gov/RegionalDraft.aspx>
- Now includes **Ecosystem Based Function (EbF) as 3<sup>rd</sup> leg** of treaty pillars of hydropower production and flood control
- Endorsed by 15 Tribes Coalition, US Entity, local governments, NPCC and countless others.
- Restoring historic fish habitat and runs; Tribes pushing hard!

# GRAND COULEE DAM

- Completed in 1942

550' high

151 mile reservoir

- 6,809 Mw capacity





Courtesy of the Commons, Oregon State University, Original Collection: Visual Instruction Department Lantern Slides



# Chief Joseph Dam

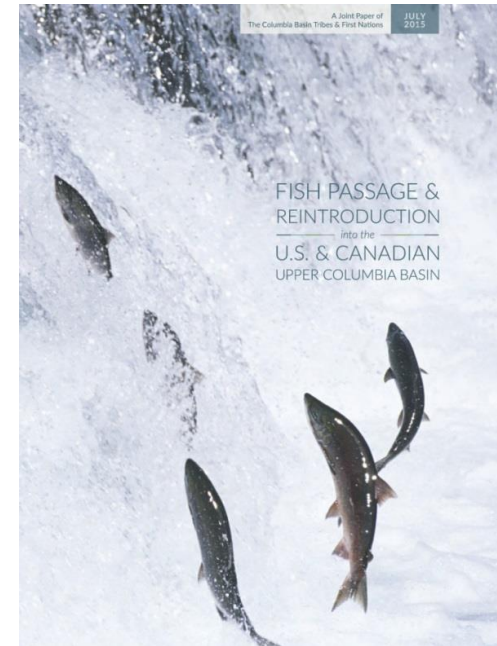
**Built in 1955    236' high    51 mile reservoir**

**2,260 Mw capacity**





Columbia  
River Basin  
Fish and Wildlife  
Program 2014



# REINTRODUCTION – REGIONAL EFFORT

Tribes are pushing all in the region to start fish passage efforts for the very future of Salmon in the entire region







**UCUT FISH RECOVERY &  
PASSAGE EFFORTS –  
REALIZING A MISSION**

- Tribal response to the NPCC 2014 Program to restore salmon runs above Chief Joseph and Grand Coulee Dams.
- Diverse collaboration to mitigate the effects of these dams to return salmon to historic habitats
- Multi-Phase investigation to properly study and includes all jurisdictions
- Supported by 15 Tribes Coalition, local governments, Northwest Power Conservation Council and many others.

Photo courtesy of the Confederated Tribes of the Colville Reservation Fish and Wildlife Dept

<https://www.cct-fnw.com/salmon-hatchery>

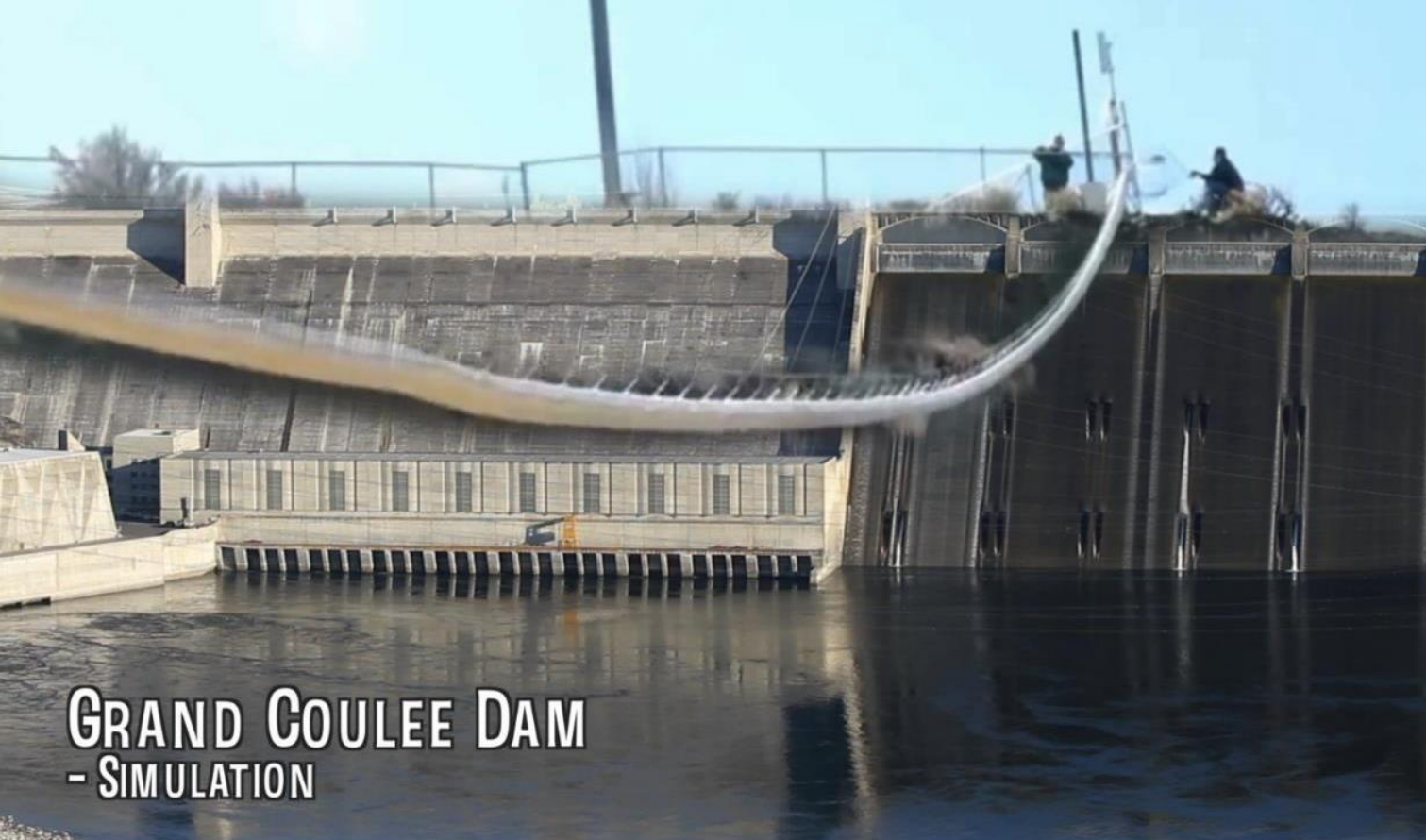




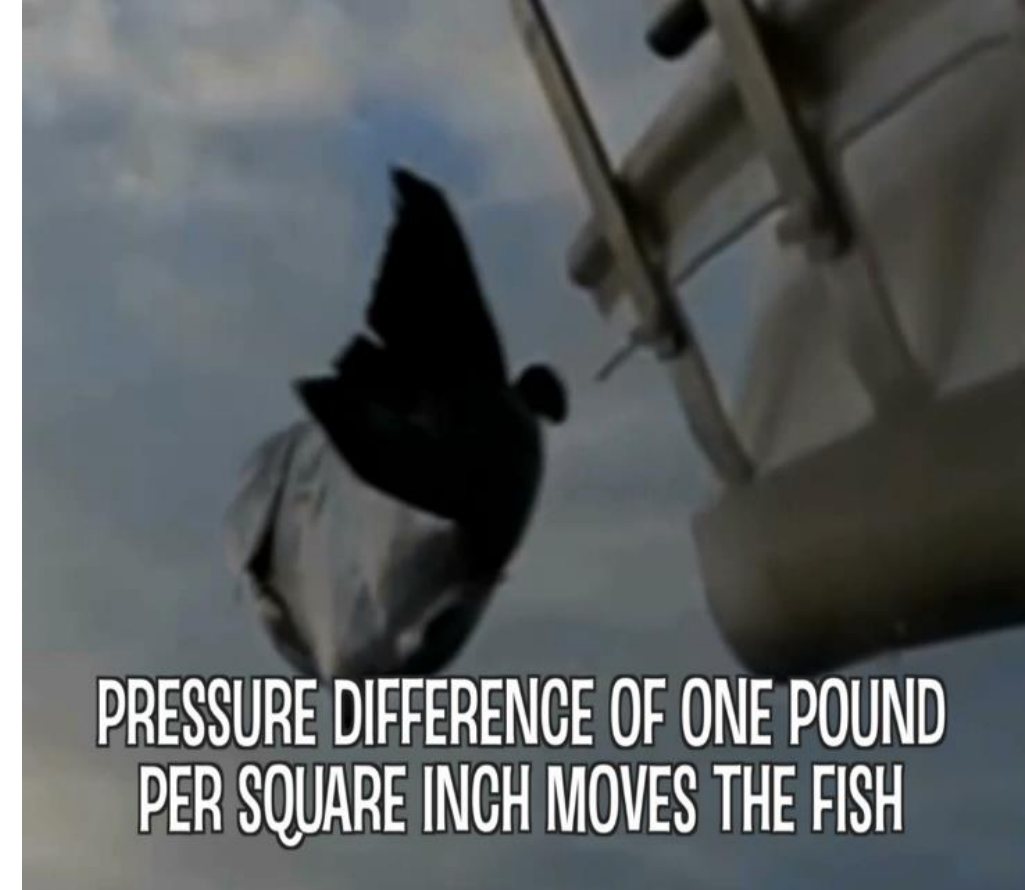
## WHY NOW?

- Must balance industrial & ecological values (costs/benefits)
- Climate Change (access to cold water refuge)
- Address historical wrongs; Spokane, Colville Tribes, the Upper Columbia Tribes need the salmon
- Regional Support: CRT Recommendation; NPCC F&W Program; City and County Resolutions





**GRAND COULEE DAM**  
- SIMULATION



**PRESSURE DIFFERENCE OF ONE POUND  
PER SQUARE INCH MOVES THE FISH**

## **NEW TECHNOLOGIES TO MOVE FISH BEYOND ANY DAM**

Might be a fun addition to a paddle or part of an educational trip!



# FLOATING SURFACE COLLECTOR

Baker Lake – Skagit Basin  
high dam

285'

Barrier nets

reservoir

Rises and falls with the



# CHALLENGES AND OPPORTUNITIES TO COLUMBIA RIVER OUTCOMES



1. Legacy Pollution; Teck Metals, Silver Valley, Midnight Mine and DOD/DOE projects (Hanford, Fairchild AFB).
2. Agriculture and Irrigation; pesticides, herbicides, animals
3. CRSO-EIS, 401 Certification of Columbia River Hydropower projects.
4. Renewable Energy (?) and impacts of PacWest Smelter.
5. Reservoir mismanagement (erosion, flows, dissolved gases)
6. Spokane River Water Quality Standards; Ecology's variances?
7. "Digital" Agriculture; server farms located for cheap power

**\*Historic and contemporary! What are we going to do about it?**





# TECK METALS HELD ACCOUNTABLE BY TRIBES OF THE COLVILLE RESERVATION

- Under the Bush Admin was deferred Superfund Site designation through an unusual and illegal agreement that bypassed all existing EPA laws
- The Tribe's fought for many years (1995) to hold the largest smelter in the world accountable through extensive litigation.
- EPA continues to uphold this agreement with Teck Metals, but with pressure from WA Ecology and the Tribes, lead testing has taken place.
- Teck Metals Smelter and Mining Corporation used the Columbia River as a dumping ground for 10's of millions of tons of slag directly into the river.
- The courts have rendered a CERCLA decision that may be at the last stages of appeal at the US Supreme Court.





# ***HISTORIC CANOE JOURNEY - 2016***





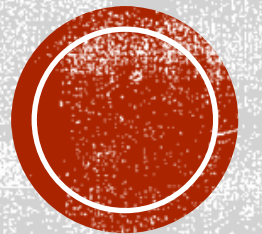
# PADDLE TO KETTLE FALLS

River Warriors are a great canoe family organization to collaborate with at virtually every river system.





***CULTURAL RELEASE OF SALMON  
– THEY HAVE RETURNED***



# ENGAGING LOCAL TRIBES



- Protocol to engage Tribal contacts;
  - Contact PR person, if a Tribe has one,
  - Explore Tribe's website for possible contacts, FB Page
  - Look to local magazines like the Inlander in our area.
- Keep Trying; some folks are busy
- Explore the issues Tribes are working on like Fish passage, water quality, forestry, etc. to find additional contacts
- Local Tribal groups like River Warriors can be key connections
- Again, follow up, they can be busy



# ENGAGING LOCAL TRIBES



- Take time to understand Tribal history of the area
- Understand or prepare some discussion points on Tribal land status or how Tribes maintain connection to the lands
- Understand current issues that impact them
- See if local Tribe has someone that can speak to those issues on site!



# CONCLUSION: MAKE LASTING CONNECTIONS

- Try to understand and incorporate the local and Tribal histories of the area
- **Keep trying** to make contact because many of these Tribes are busy! They care about being good hosts, but they are busy
- Informed visitors are respectful visitors/recreators
- Have fun and make some lasting contacts
- **Education** makes everything better, especially recreation!